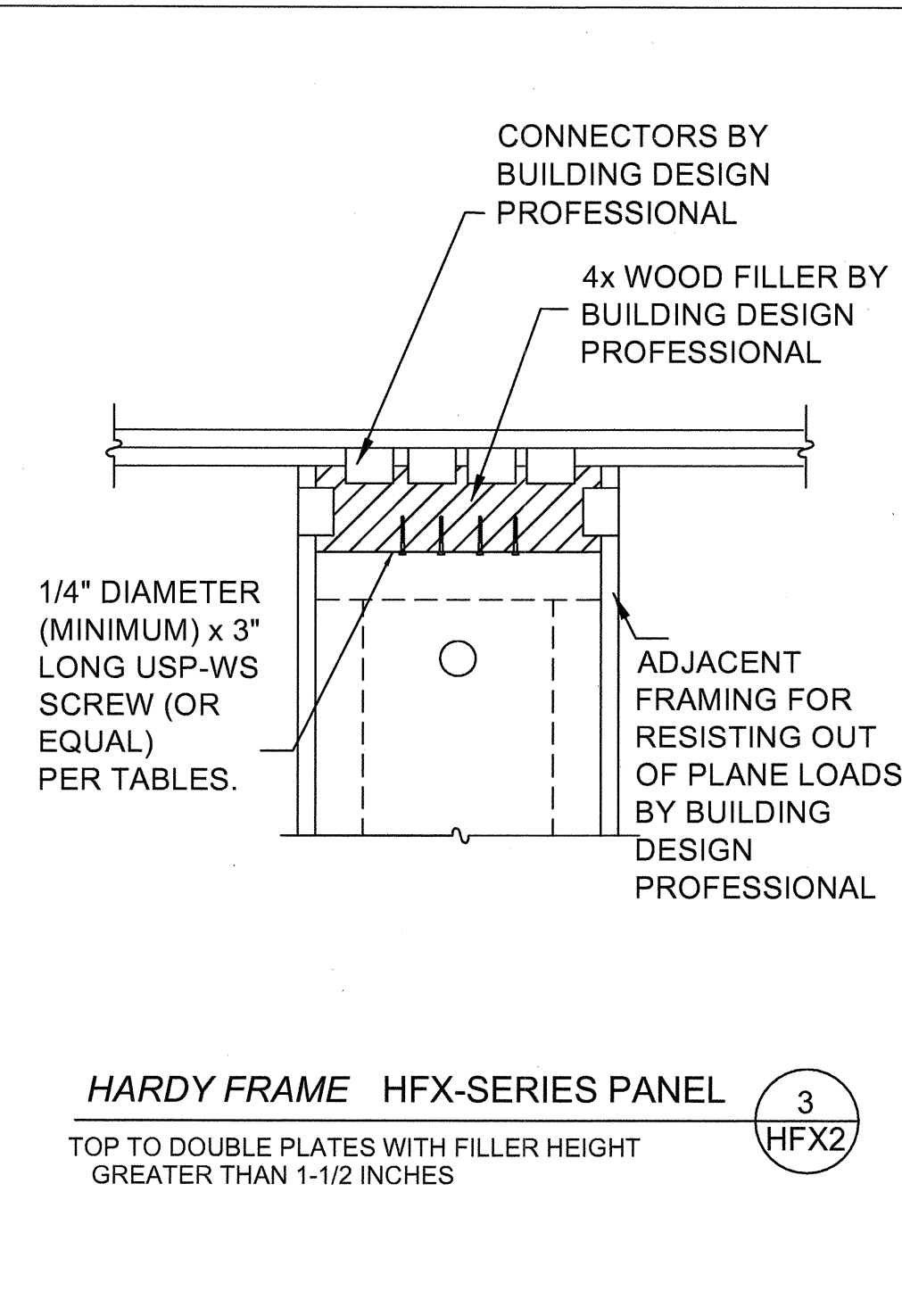
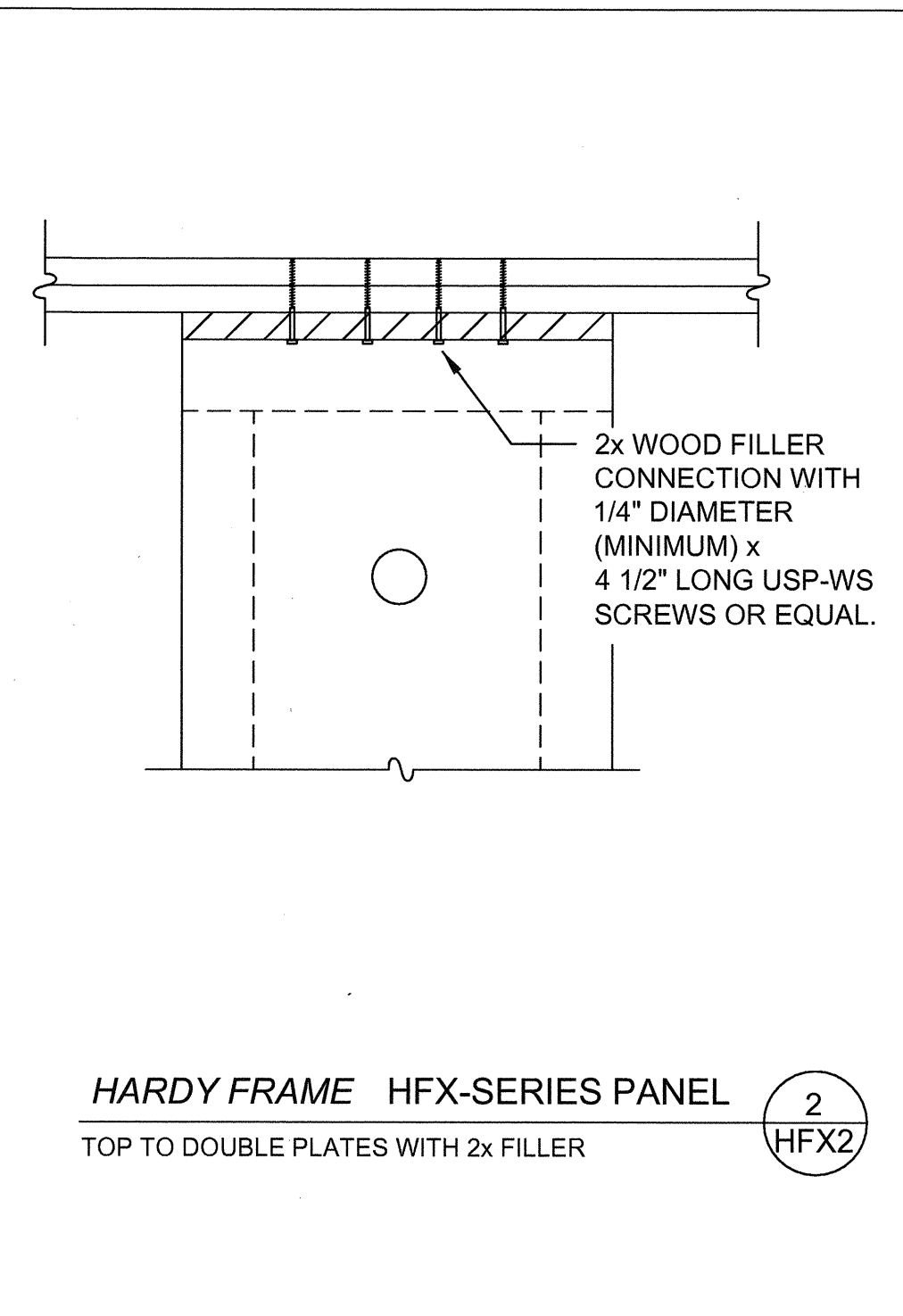


BUILDING DESIGN PROFESSIONAL MUST DESIGN:
 1. STUDS OR STRAPS TO TRANSFER UPLIFT OF FILLER MATERIAL
 2. ADDITIONAL DRIFT DUE TO THE ADDITIONAL FILLER HEIGHT
 3. STUDS/POST AT EACH END OF PANEL FOR OUT OF PLANE LOAD

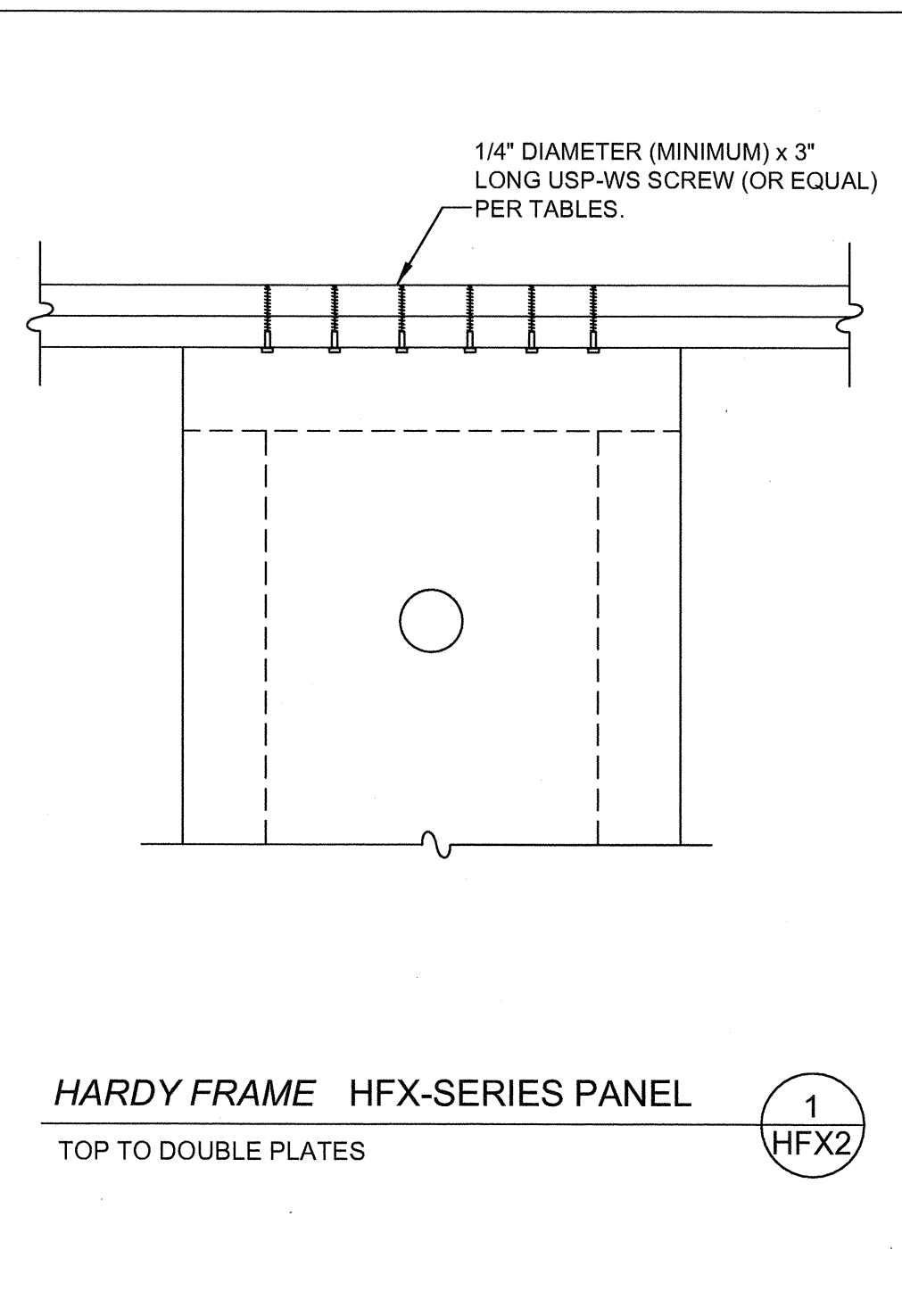
HARDY FRAME HFX-SERIES PANEL (4) **HFX2**
 TOP TO SLOPING DOUBLE PLATE WITH BEVEL FILLER



HARDY FRAME HFX-SERIES PANEL (3) **HFX2**
 TOP TO DOUBLE PLATES WITH FILLER HEIGHT GREATER THAN 1-1/2 INCHES



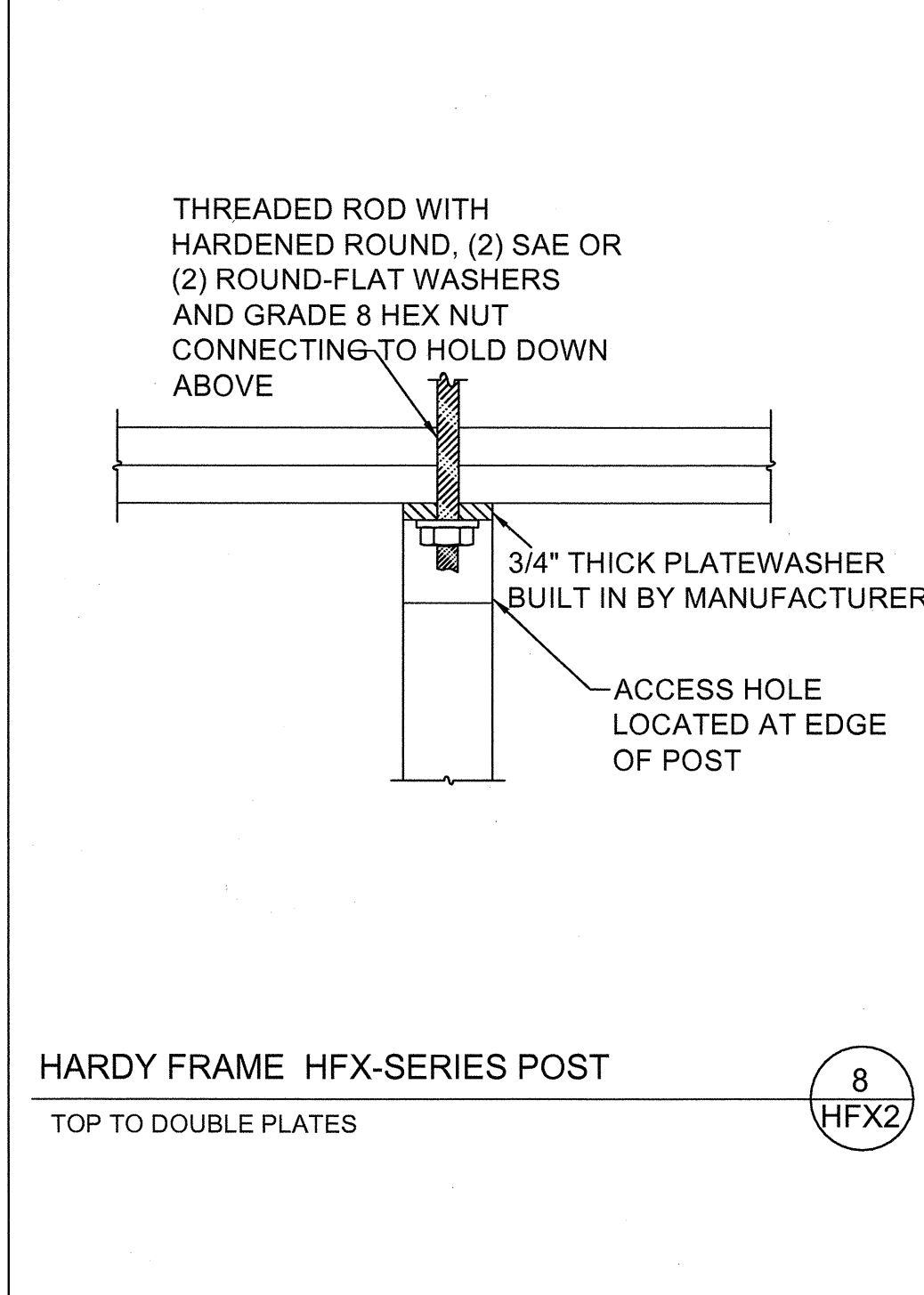
HARDY FRAME HFX-SERIES PANEL (2) **HFX2**
 TOP TO DOUBLE PLATES WITH 2x FILLER



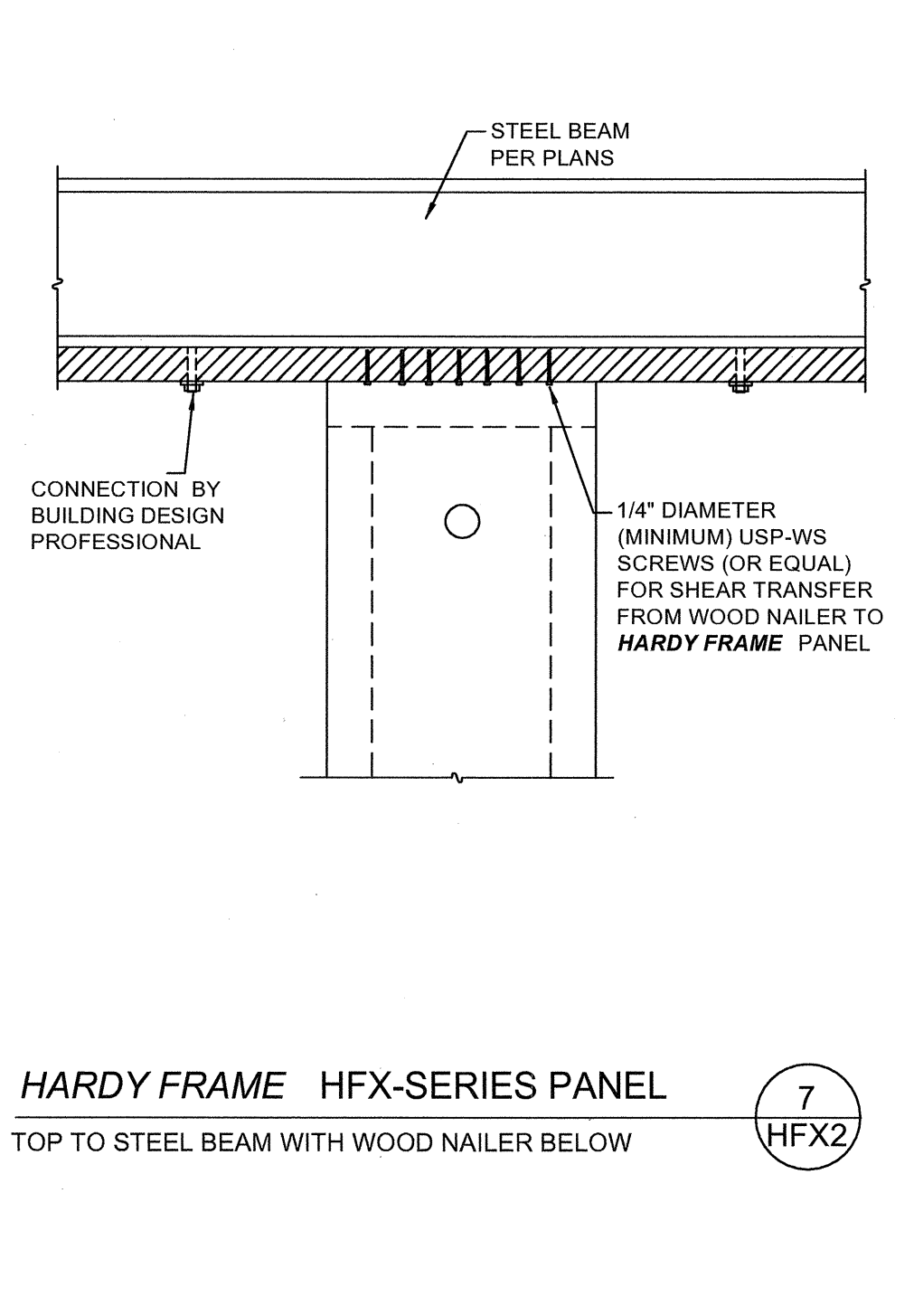
HARDY FRAME HFX-SERIES PANEL (1) **HFX2**
 TOP TO DOUBLE PLATES

MODEL NUMBER	NET HEIGHT (in)	DEPTH (in)	Hold Down Diameter ¹ (in)	Top Screw ² Qty (ea)	Bottom Screw ³ Qty (ea)	Screw Qty Available at Edges (ea)
HFX-9x79.5	79-1/2	3-1/2	1-1/8	8	NA	4
HFX-9x8	92-1/4					
HFX-12x78	78	3-1/2	1-1/8	7	6	4
HFX-12x8	92-1/4					
HFX-12x9	104-1/4					
HFX-12x10	116-1/4	3-1/2	1-1/8	10	NA	5
HFX-18x78	78					
HFX-18x8	92-1/4					
HFX-18x9	104-1/4					
HFX-18x10	116-1/4					
HFX-18x11	128-1/4					
HFX-18x12	140-1/4					
HFX-18x13	152-1/4					
HFX-18x14	164-1/4					
HFX-18x15	176-1/4					
HFX-18x16	188-1/4	3-1/2	1-1/8	14	10	4
HFX-18x17	200-1/4					
HFX-18x18	212-1/4					
HFX-18x19	224-1/4					
HFX-18x20	236-1/4					
HFX-24x78	78					
HFX-24x8	92-1/4					
HFX-24x9	104-1/4					
HFX-24x10	116-1/4					
HFX-24x11	128-1/4					
HFX-24x12	140-1/4					
HFX-24x13	152-1/4					
HFX-24x14	164-1/4					
HFX-24x15	176-1/4					
HFX-24x16	188-1/4					
HFX-24x17	200-1/4					
HFX-24x18	212-1/4					
HFX-24x19	224-1/4					
HFX-24x20	236-1/4					

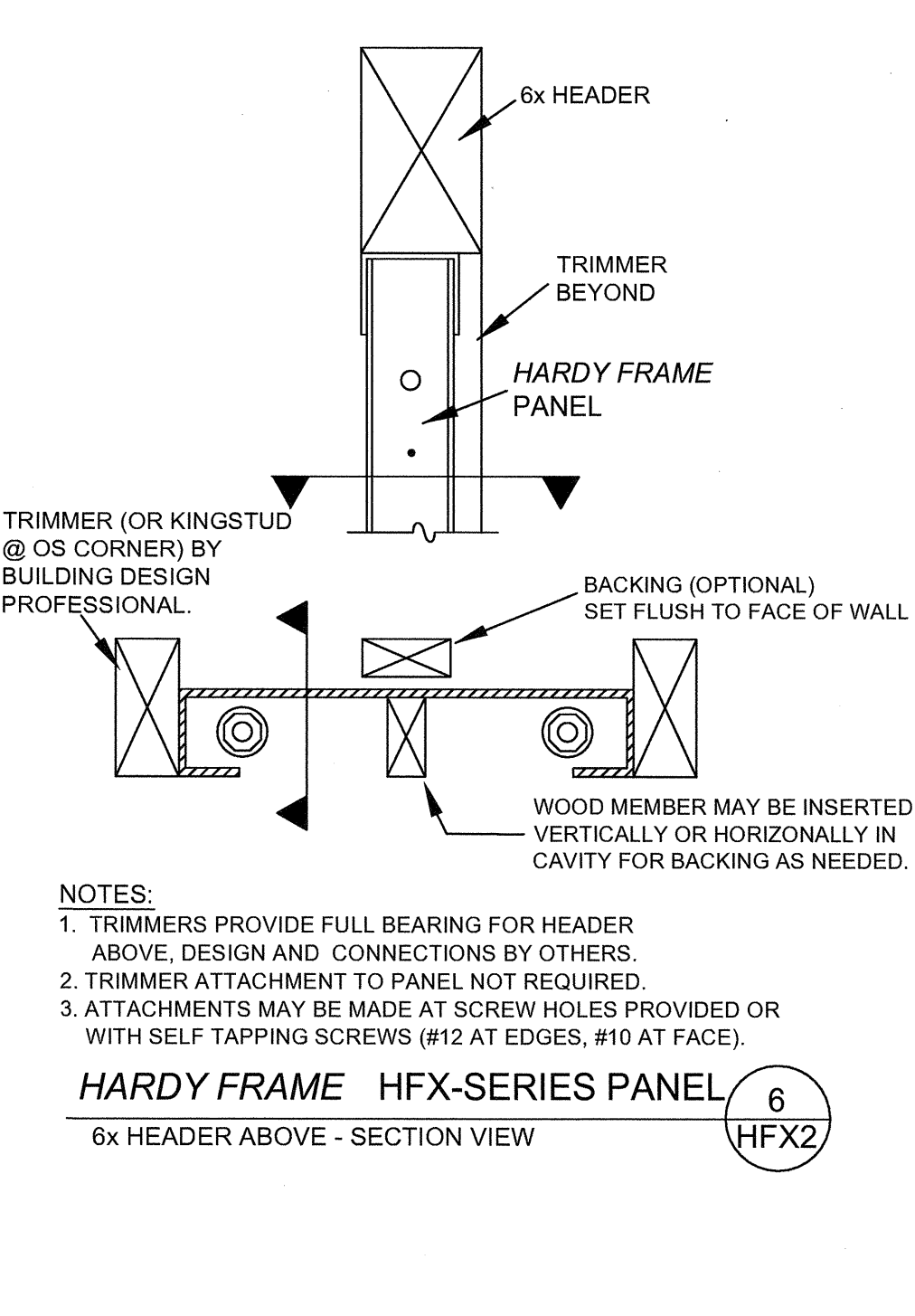
MODEL NUMBER	NET HEIGHT (in)	DEPTH (in)	Hold Down Diameter ¹ (in)	Top Screw ² Qty (ea)	Bottom Screw ³ Qty (ea)	Screw Qty Available at Edges (ea)
HFX-18x78	78	3-1/2	1-1/8	10	NA	4
HFX-18x8	92-1/4					
HFX-18x9	104-1/4					
HFX-18x10	116-1/4					
HFX-18x11	128-1/4					
HFX-18x12	140-1/4					
HFX-18x13	152-1/4					
HFX-18x14	164-1/4					
HFX-18x15	176-1/4					
HFX-18x16	188-1/4					
HFX-18x17	200-1/4	3-1/2	1-1/8	14	14	5
HFX-18x18	212-1/4					
HFX-18x19	224-1/4					
HFX-18x20	236-1/4					
HFX-24x78	78					
HFX-24x8	92-1/4					
HFX-24x9	104-1/4					
HFX-24x10	116-1/4					
HFX-24x11	128-1/4					
HFX-24x12	140-1/4					
HFX-24x13	152-1/4					
HFX-24x14	164-1/4					
HFX-24x15	176-1/4					
HFX-24x16	188-1/4					
HFX-24x17	200-1/4					
HFX-24x18	212-1/4					
HFX-24x19	224-1/4					
HFX-24x20	236-1/4					



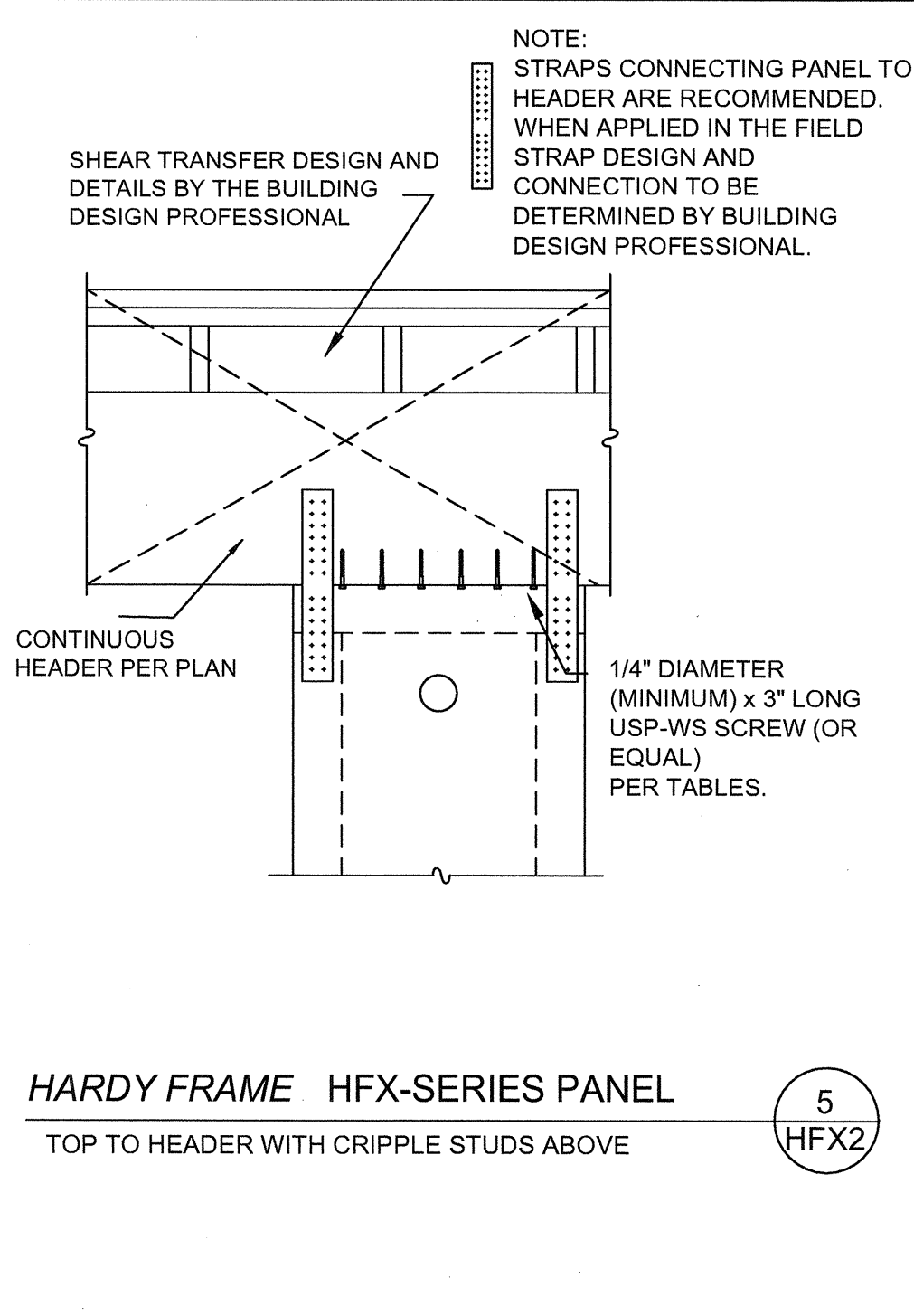
HARDY FRAME HFX-SERIES POST (8) **HFX2**
 TOP TO DOUBLE PLATES



HARDY FRAME HFX-SERIES PANEL (7) **HFX2**
 TOP TO STEEL BEAM WITH WOOD NAILER BELOW



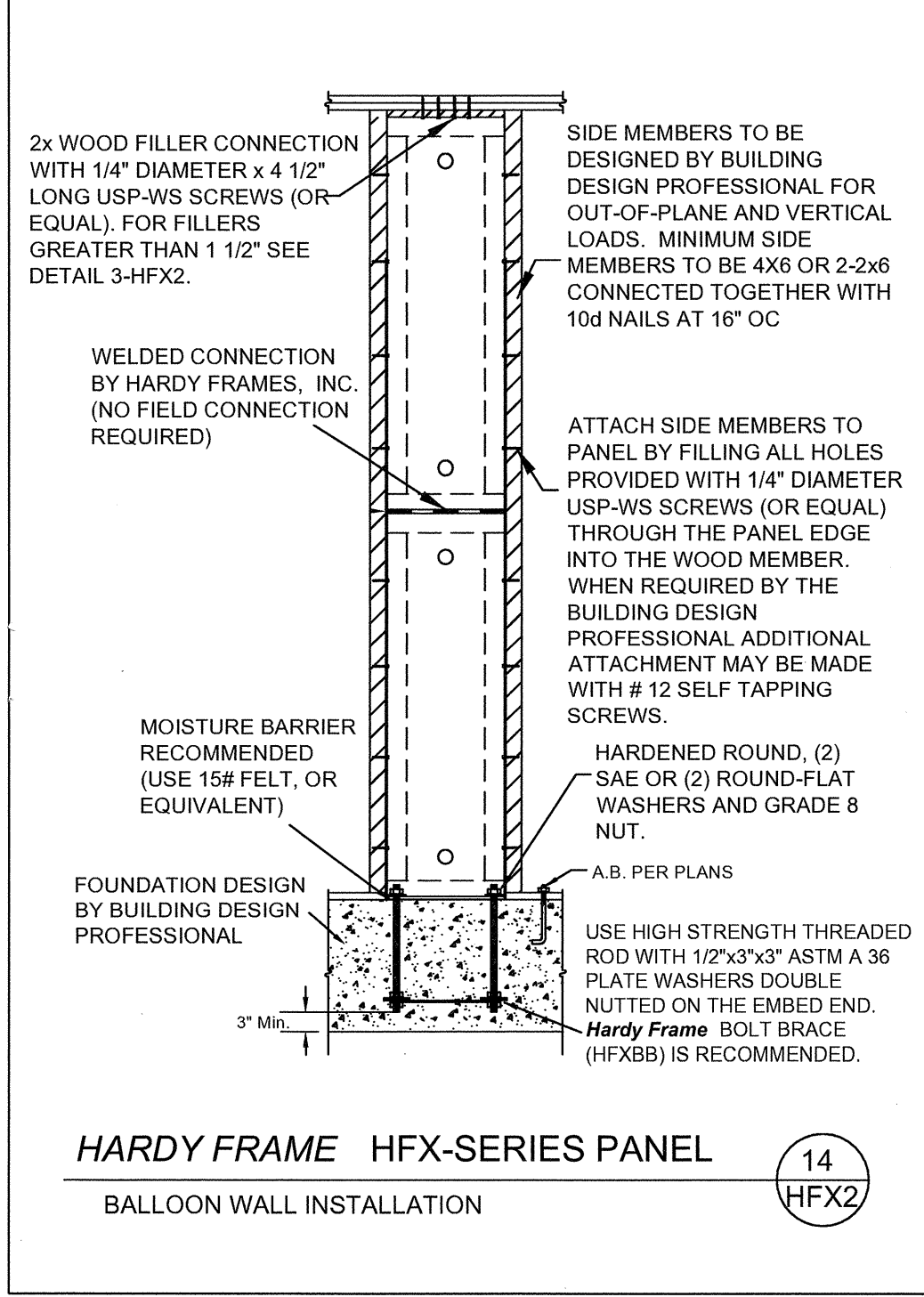
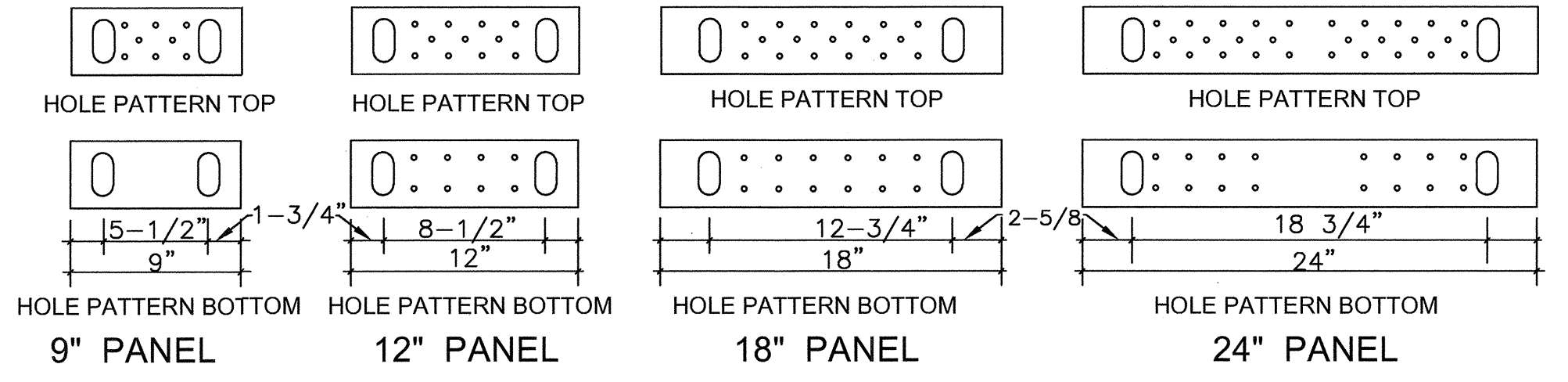
HARDY FRAME HFX-SERIES PANEL (6) **HFX2**
 6x HEADER ABOVE - SECTION VIEW



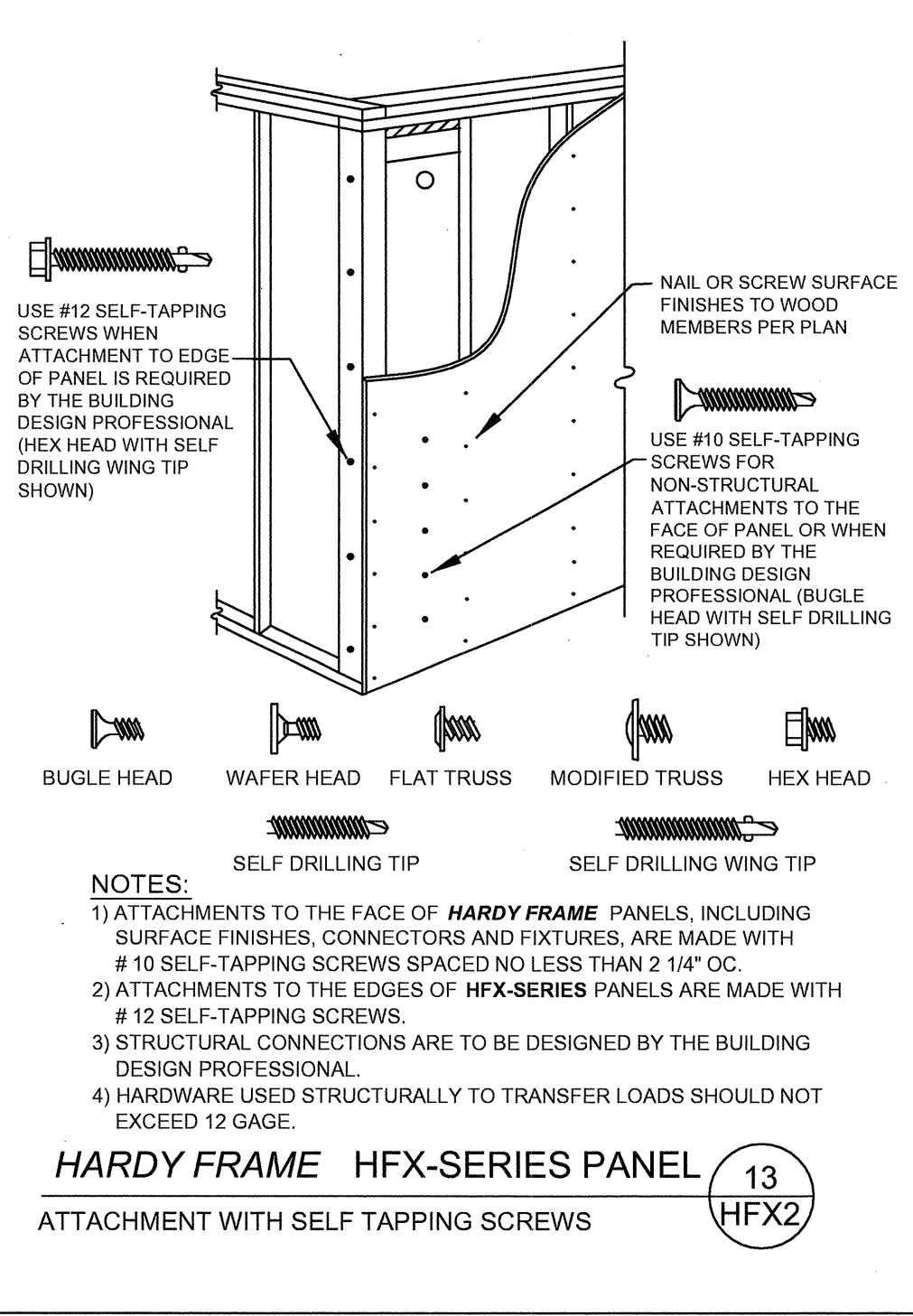
HARDY FRAME HFX-SERIES PANEL (5) **HFX2**
 TOP TO HEADER WITH CRIPPLE STUDS ABOVE

MODEL NUMBER	NET HEIGHT (in)	DEPTH (in)	Hold Down Diameter ¹ (in)	Top Screw ² Qty (ea)	Bottom Screw ³ Qty (ea)	Screw Qty Available at Edges (ea)
HFX-24x78	78	3-1/2	1-1/8	18	16	4
HFX-24x8	92-1/4					
HFX-24x9	104-1/4					
HFX-24x10	116-1/4					
HFX-24x11	128-1/4					
HFX-24x12	140-1/4					
HFX-24x13	152-1/4					
HFX-24x14	164-1/4					
HFX-24x15	176-1/4					
HFX-24x16	188-1/4					
HFX-24x17	200-1/4	3-1/2	1-1/8	14	NA	8
HFX-24x18	212-1/4					
HFX-24x19	224-1/4					
HFX-24x20	236-1/4					
HFX-24x78	78					
HFX-24x8	92-1/4					
HFX-24x9	104-1/4					
HFX-24x10	116-1/4					
HFX-24x11	128-1/4					
HFX-24x12	140-1/4					
HFX-24x13	152-1/4					
HFX-24x14	164-1/4					
HFX-24x15	176-1/4					
HFX-24x16	188-1/4					
HFX-24x17	200-1/4					
HFX-24x18	212-1/4					
HFX-24x19	224-1/4					
HFX-24x20	236-1/4					

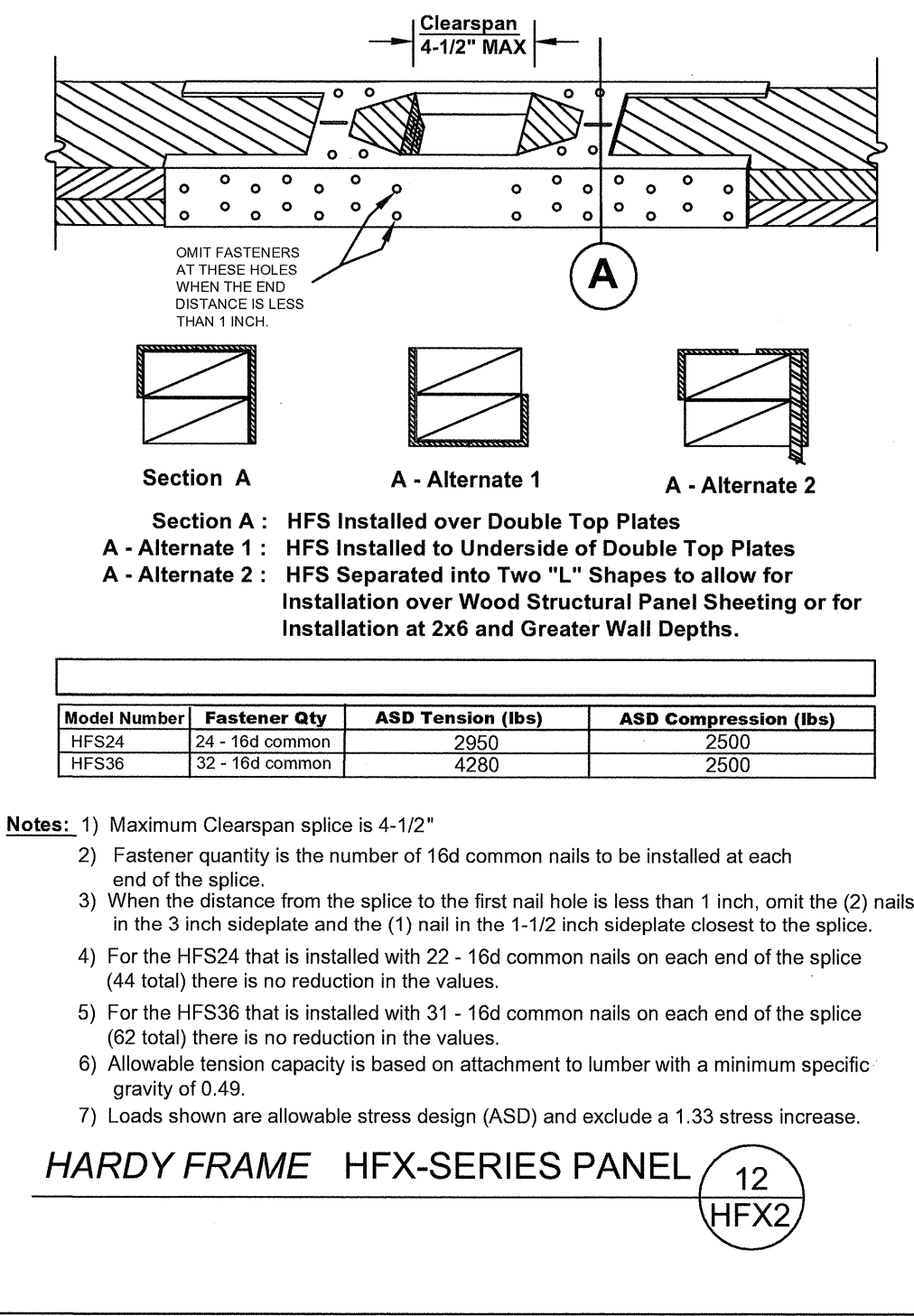
¹ Hold down bolts connect to the Panel base with one Hardened Round, two Round-Flat or two SAE Washers and a Grade 8 Hex Nut on each rod or as specified by the Building Design Professional.
² Screws at top are USP-WS Series (or equal). Use 1/4 x 3" (minimum) when attached directly to the collector, 1/4 x 4-1/2" (minimum) when installing a 2x filler above the Panel.
³ Screws at bottom are USP-WS Series (or equal). Use 1/4 x 4-1/2" (minimum) through base of Panel, 1/4 x 3" (minimum) at **Hardy Frame** Bearing Plate (HFXBP).



HARDY FRAME HFX-SERIES PANEL (14) **HFX2**
 BALLOON WALL INSTALLATION



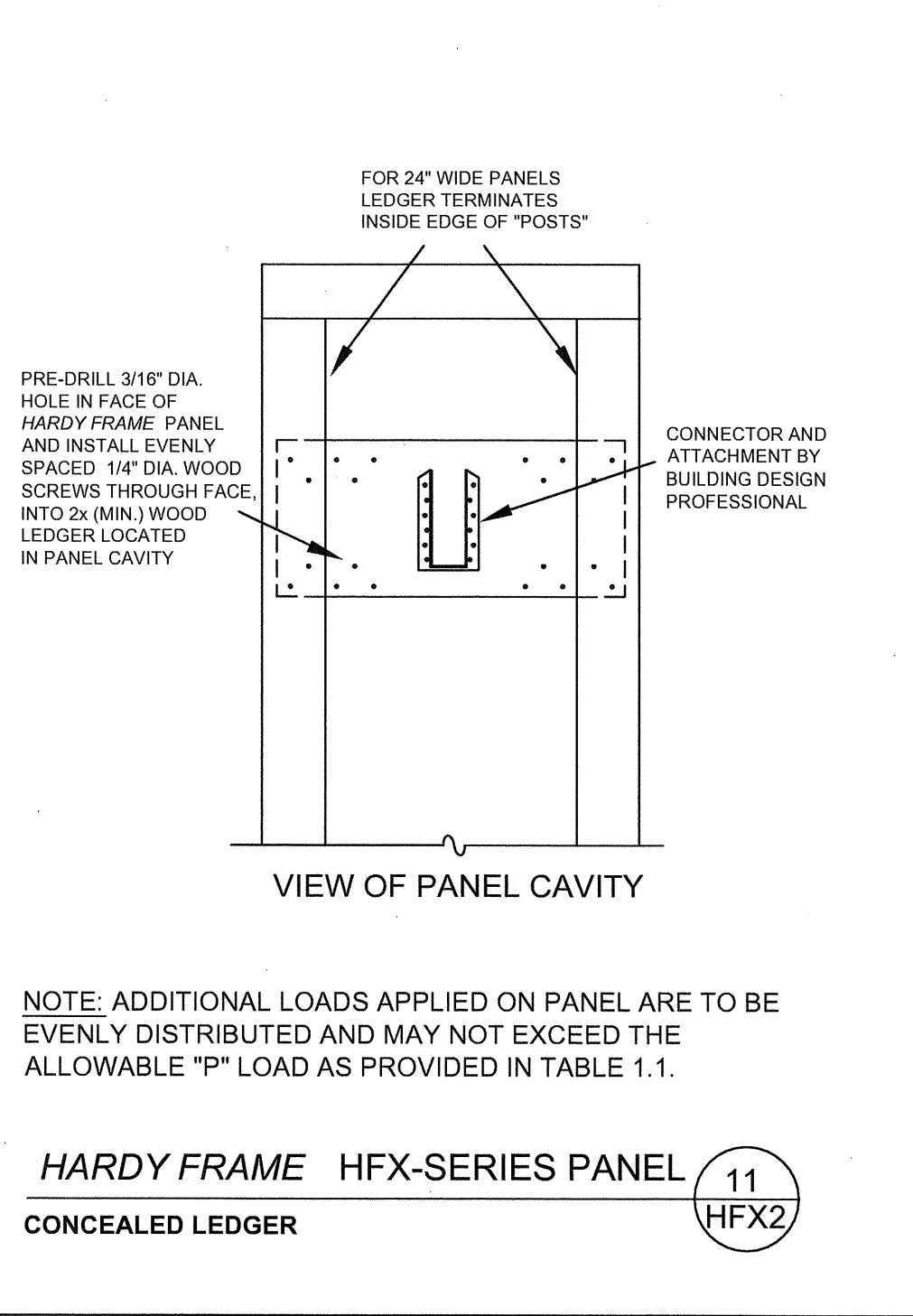
HARDY FRAME HFX-SERIES PANEL (13) **HFX2**
 ATTACHMENT WITH SELF TAPPING SCREWS



Model Number	Fastener Qty	ASD Tension (lbs)	ASD Compression (lbs)
HFS24	24 - 16d common	2950	2500
HFS36	32 - 16d common	4280	2500

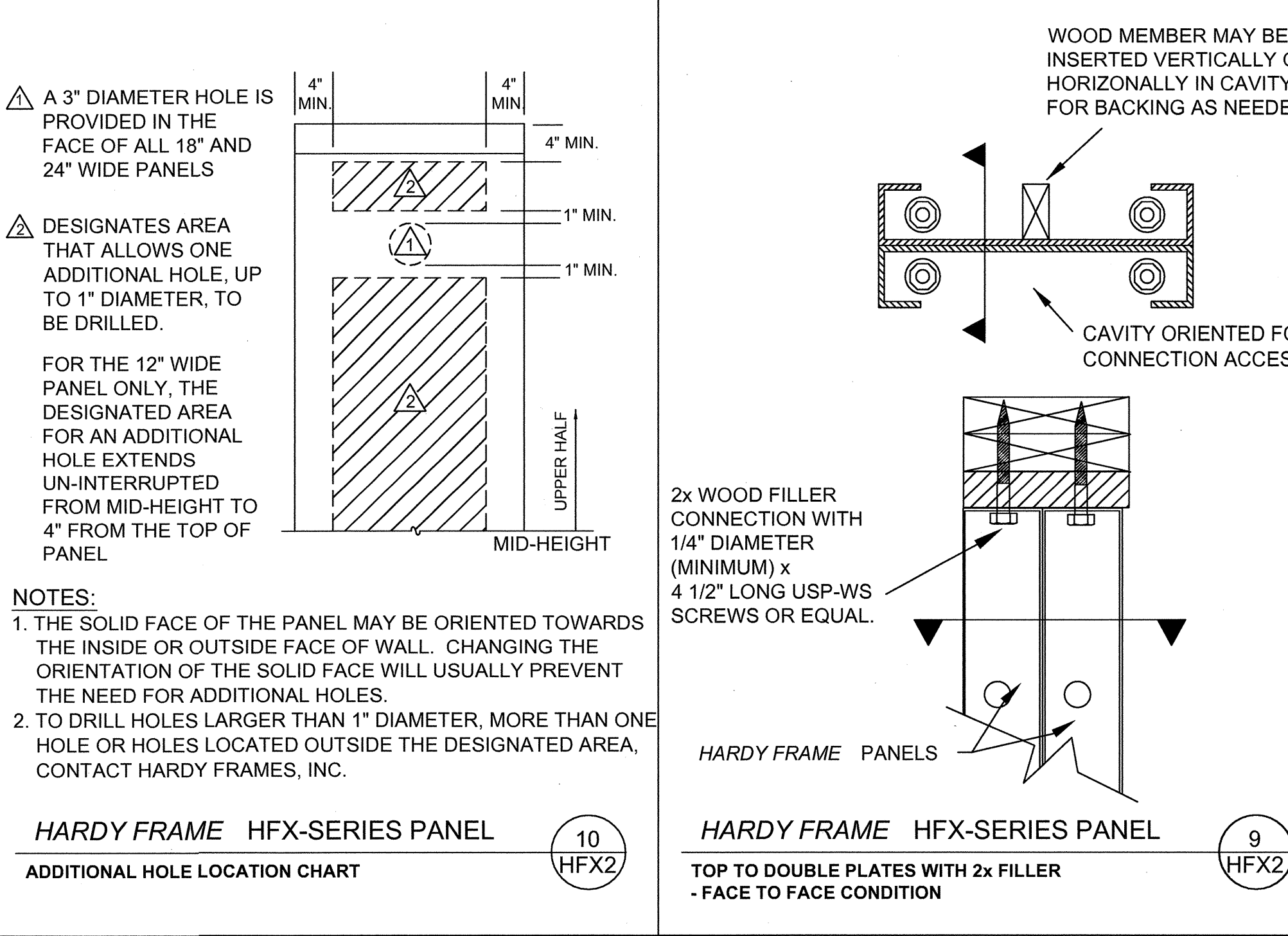
Notes:
 1) Maximum Clearspan splice is 4-1/2"
 2) Fastener quantity is the number of 16d common nails to be installed at each end of the splice.
 3) When the distance from the splice to the first nail hole is less than 1 inch, omit the (2) nails in the 3 inch sideplate and the (1) nail in the 1-1/2 inch sideplate closest to the splice.
 4) For the HFS24 that is installed with 22 - 16d common nails on each end of the splice (44 total) there is no reduction in the values.
 5) For the HFS36 that is installed with 31 - 16d common nails on each end of the splice (62 total) there is no reduction in the values.
 6) Allowable tension capacity is based on attachment to lumber with a minimum specific gravity of 0.49.
 7) Loads shown are allowable stress design (ASD) and exclude a 1.33 stress increase.

HARDY FRAME HFX-SERIES PANEL (12) **HFX2**



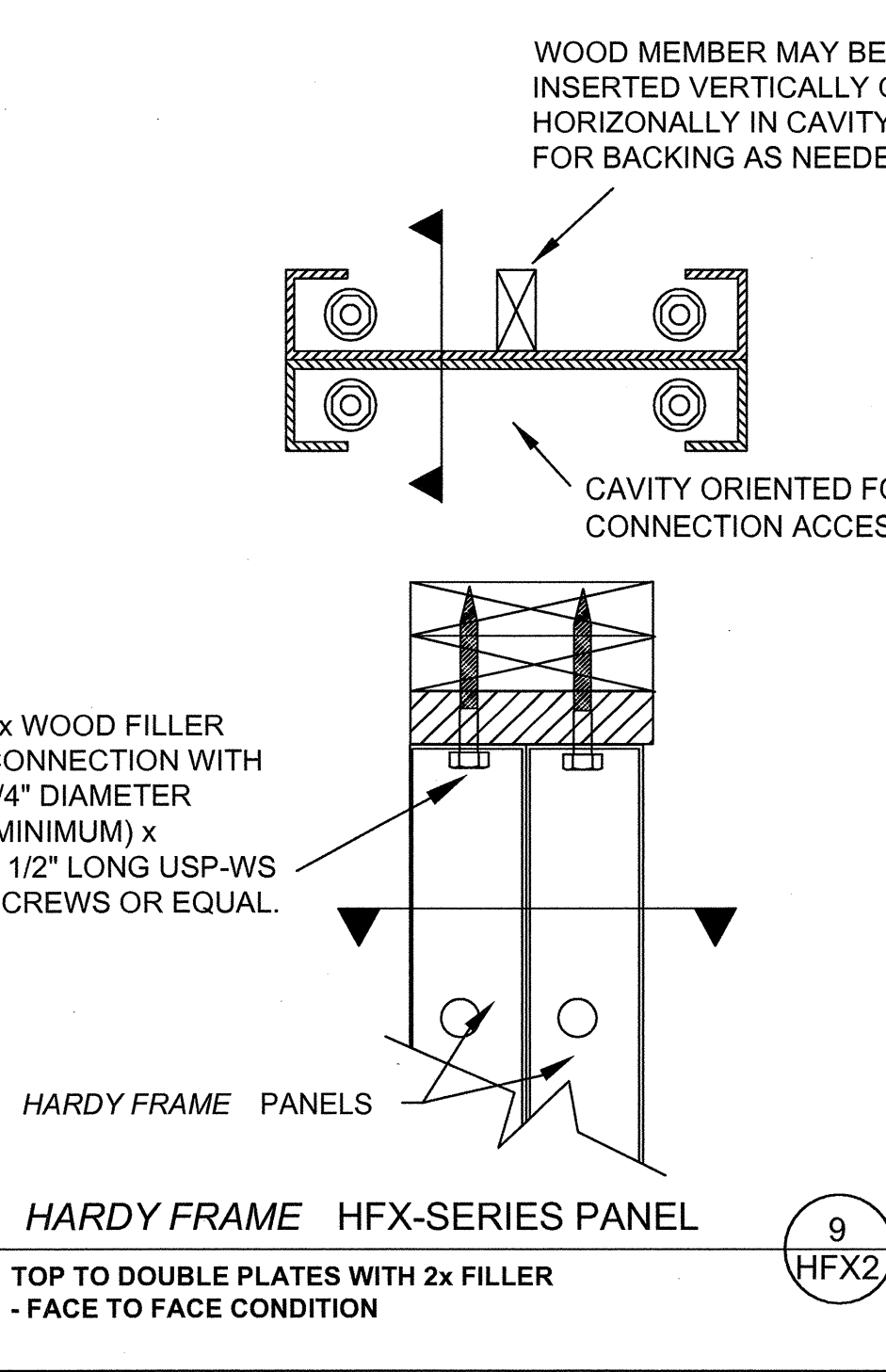
NOTE: ADDITIONAL LOADS APPLIED ON PANEL ARE TO BE EVENLY DISTRIBUTED AND MAY NOT EXCEED THE ALLOWABLE "P" LOAD AS PROVIDED IN TABLE 1.1.

HARDY FRAME HFX-SERIES PANEL (11) **HFX2**
 CONCEALED LEDGER



NOTES:
 1. THE SOLID FACE OF THE PANEL MAY BE ORIENTED TOWARDS THE INSIDE OR OUTSIDE FACE OF WALL. CHANGING THE ORIENTATION OF THE SOLID FACE WILL USUALLY PREVENT THE NEED FOR ADDITIONAL HOLES.
 2. TO DRILL HOLES LARGER THAN 1" DIAMETER, MORE THAN ONE HOLE OR HOLES LOCATED OUTSIDE THE DESIGNATED AREA, CONTACT HARDY FRAMES, INC.

HARDY FRAME HFX-SERIES PANEL (10) **HFX2**
 ADDITIONAL HOLE LOCATION CHART



HARDY FRAME HFX-SERIES PANEL (9) **HFX2**
 TOP TO DOUBLE PLATES WITH 2x FILLER - FACE TO FACE CONDITION

REVISIONS | DATE

HFX-Series Panels Typical Framing Details

THIS DETAIL SHEET IS NOT PROPRIETARY AND IS NOT REQUIRED FOR PLAN SUBMITTAL WITH **HARDY FRAME** PRODUCTS

HARDY FRAMES Inc.
 A Mittek Company
 789 S. VICTORIA AVE., SUITE 200, VENTURA, CA 93003
 TELEPHONE: 800 754-3030 / www.hardyframe.com

DATE: 1-1-2011

HFX2 FRMG