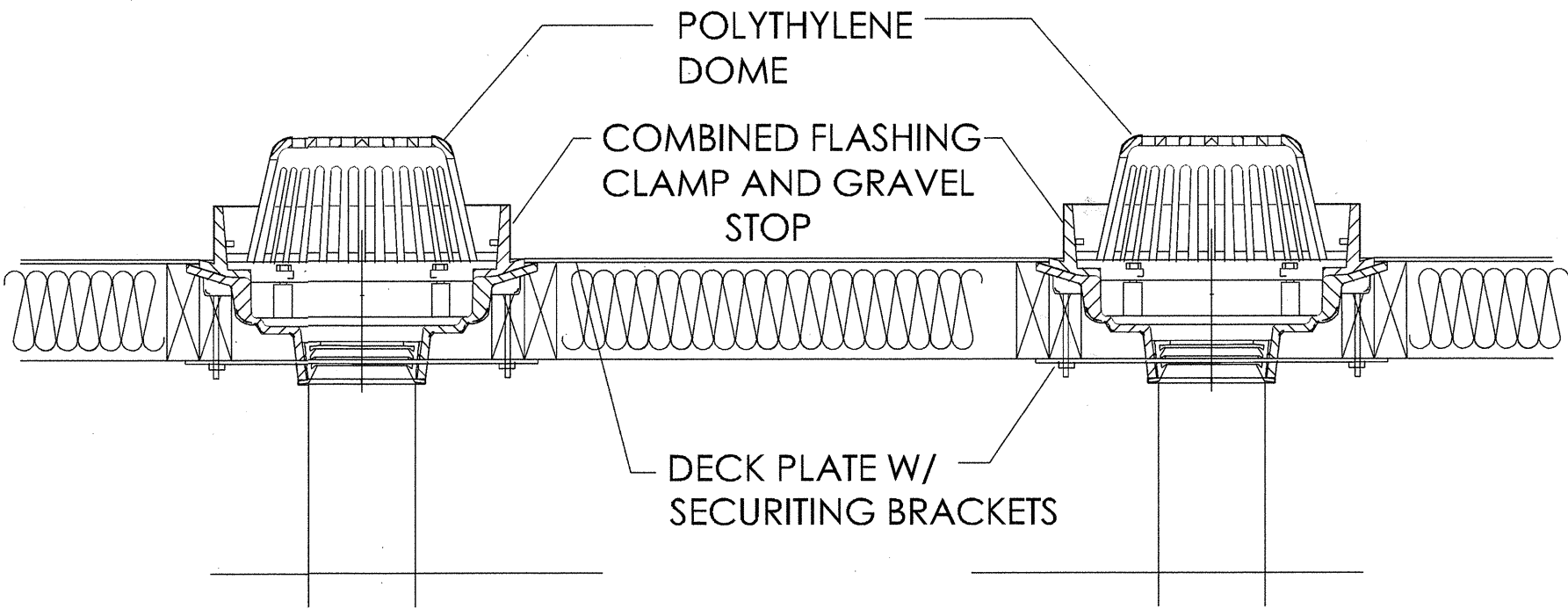


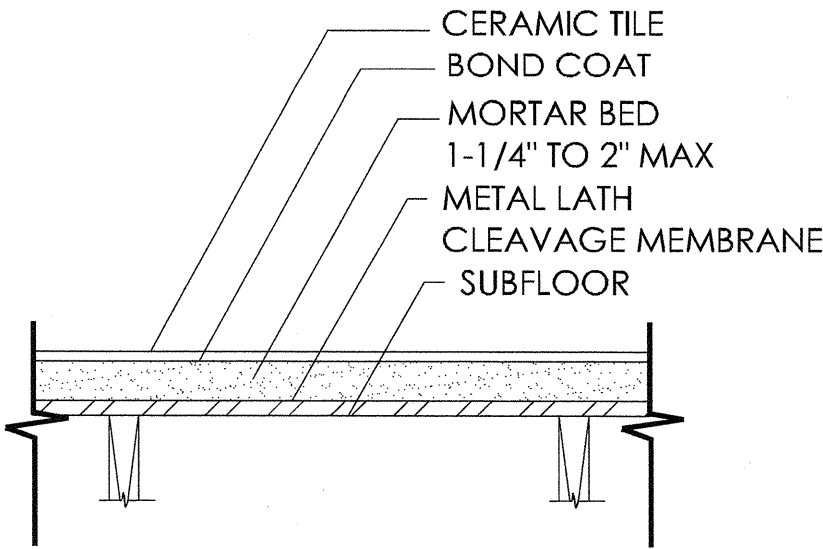
0065
B LA 21512
APPROVED

ROOF DRAIN & OVERFLOW DRAIN

FUNCTION: used on Flat Roof of any construction (other than poured in place) where an emergency overflow drain can be used in combination with a standard roof drain. Large sump drain bodies with low profile domes provide sufficient free area for quick drainage of rainwater while protecting the drain sump and connected piping from the intrusion of debris. Internal standpipe type overflow drain receives water only when the build-up is greater than the setting of the standpipe. Water dam standpipe can be cut to achieve various water depths on the roof. Attached wide dual drain deck plate with security holes enables both drains to be secured to the roof deck from the surface of the roof, reducing installation time, reducing the number of roof penetrations and eliminating the need for an underdeck clamp. The wide dual deck plate also recesses the drains slightly to prevent water build-up at the base of the drains.

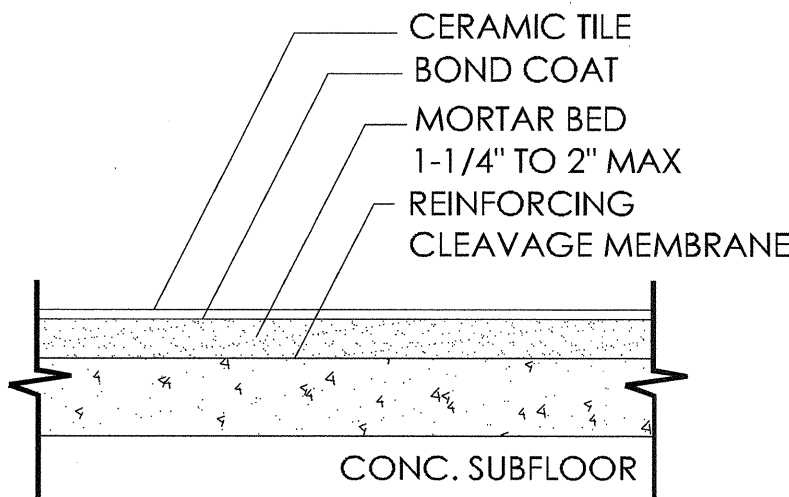


FLOORS, INTERIOR
WOOD SUBFLOOR

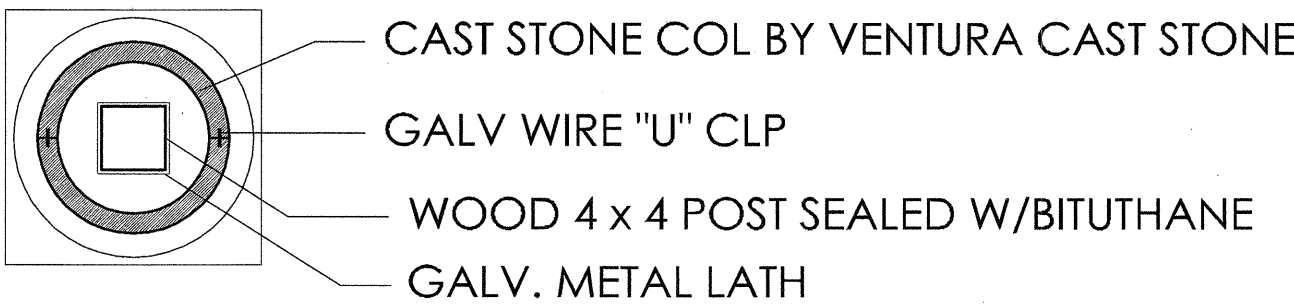


DETAIL "B" *
FLOOR AT BATHROOM

FLOORS, INTERIOR
CONCRETE SUBFLOOR



DETAIL (*)



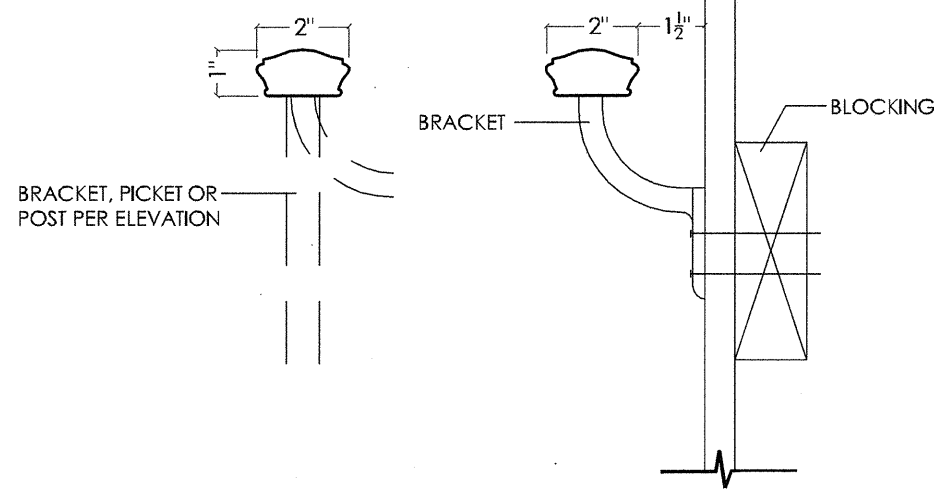
CAST STONE COL. DETAIL

INTERIOR FLOOR DETAILS

DRAIN & OVERFLOW DETAIL

STAIR NOTES: HANDRAIL 34" TO 38" HIGH
ABOVE TREAD NOSING.

WROUGHT IRON RAILING DETAILS



- Handgrip portion of handrail shall not be less than 1-1/4" nor more than 2" cross-sectional dimension having a smooth surface with no sharp corners.
- Less than 4" clear spacing between intermediate rails.

- Handrail extensions of min. 12" beyond top and bottom risers when serving more than one unit.