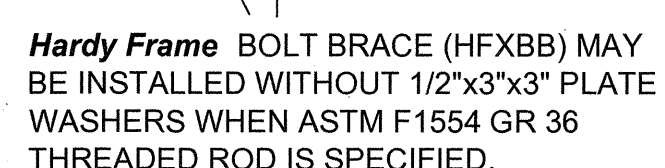
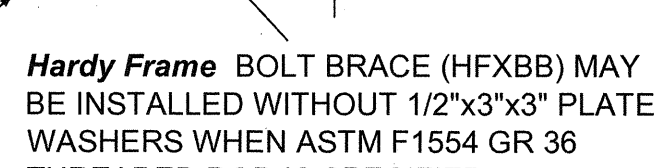


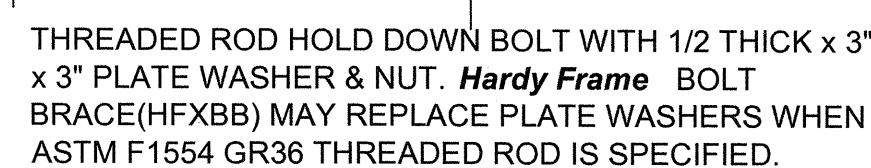
**HARDY FRAME HFX-SERIES PANEL**  
ON WOOD SILL



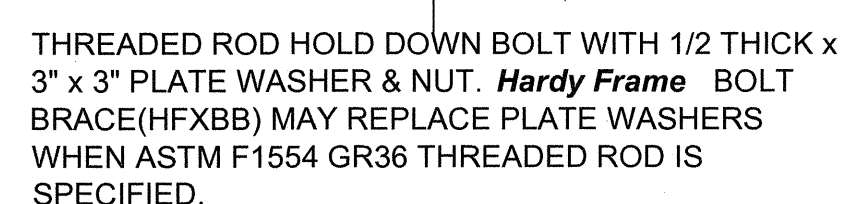
**HARDY FRAME HFX-SERIES PANEL**  
ON NUT & WASHER (DOUBLE NUT)



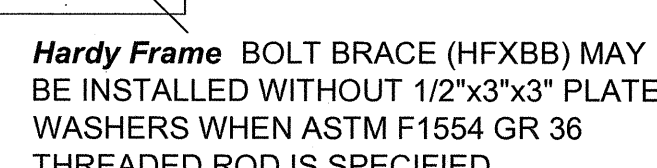
**HARDY FRAME HFX-SERIES PANEL**  
ON FOUNDATION



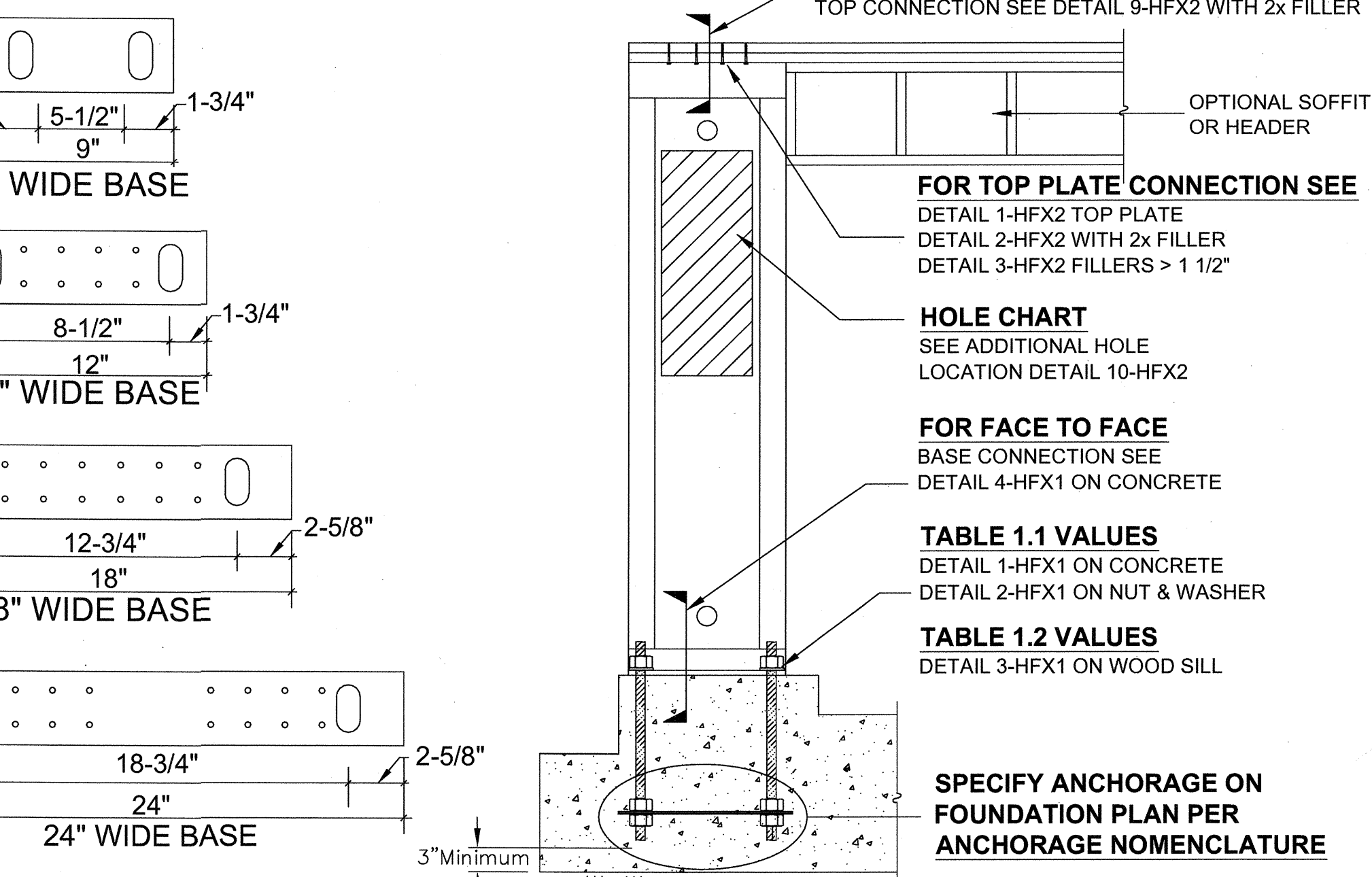
**HARDY FRAME HFX-SERIES POST**  
**ON NUT & WASHER (DOUBLE NUT)**



HARDY FRAME HFX-SERIES POST  
ON FOUNDATION



**HARDY FRAME HFX-SERIES PANEL**  
**ON FOUNDATION - FACE TO FACE CONDITION**

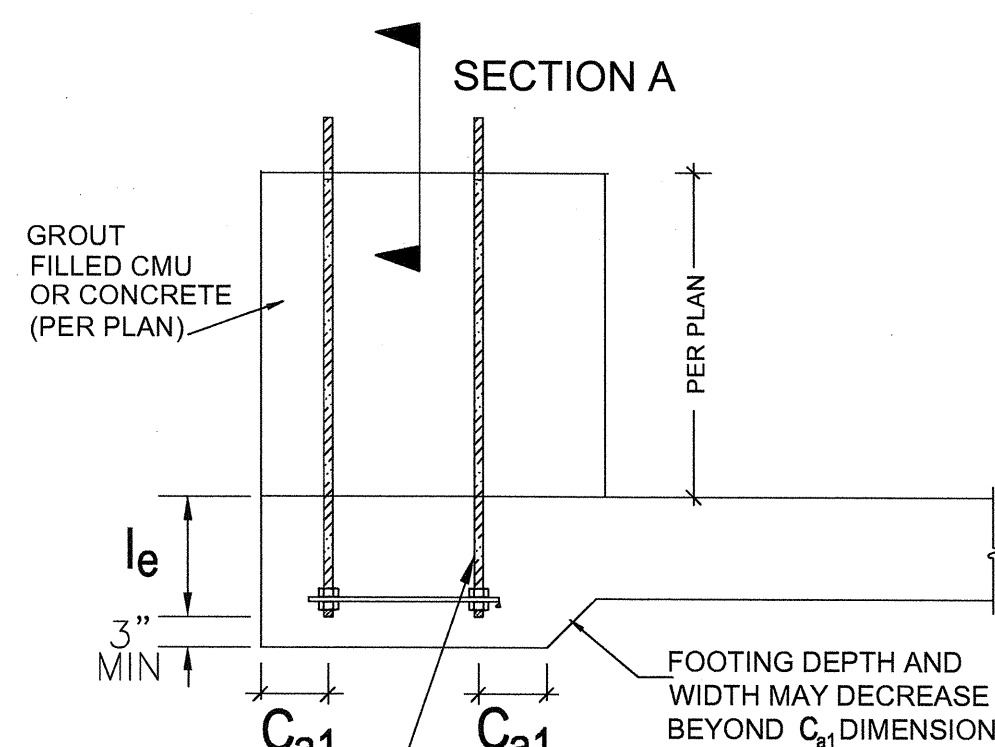


## DETAIL SPECIFICATION GUIDE

Product Width (in)	Max. Height (ft)	Anchorage (See Nomenclature for Description)		Shear Tie		
				Quantity		Length L <sub>1</sub> (in)
		STD	HS	STD	HS	
9	8	1-1/8 STD 12-17	NA	1	1	7-1/2
12	10	1-1/8 STD 14-20	1-1/8 HS 14-20			10-1/2
18	13	NA	1-1/8 HS 20-30			15
	20	1-1/8 HS 13-20				
24	13	1-1/8 STD 14-20	1-1/8 HS 20-30			
	20	NA	1-1/8 HS 18-27			

- 1) Applies to 2500 psi compressive strength concrete, both seismic and wind loading.
- 2) STD indicates rods complying with ASTM F1554 Grade 36 with a **Half Frame** Bolt Brace (HFXB) double nutted on the embed end.
- 3) HS indicates rods complying with ASTM A 193 Grade B7 (or equal) with a 1/2x3x3 plate washer double nutted on the embed end. HFXB is recommended.
- 4) Concrete edge distance must comply with ACI-318-08 D8.2.
- 5) Installation on curbs or stemwalls must be 6 inch width minimum, and require supplemental shear reinforcement per ACI-318-08,  $f_c=2500$  psi.
- 6) Shear Ties are #3 rebar, grade 60 (min.)
- 7) Shear Ties are not required for installations away from Foundation Edge, for installation on wood framing or for Braced Wall Panel applications.
- 8) Foundation Design is by others
- 9) The Building Design Professional is permitted to modify these details to accommodate a specific condition.

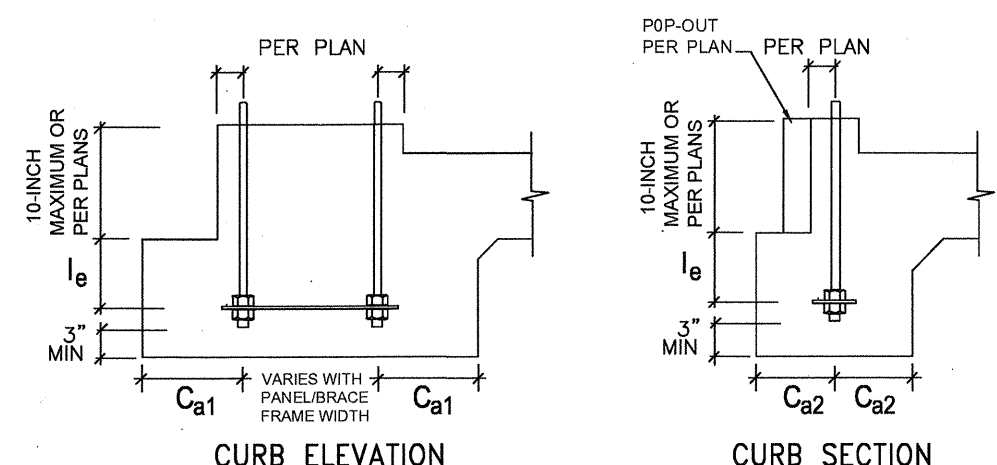
**HARDY FRAME 2009 IBC HOLD DOWN ANCHORAGE TABLE**



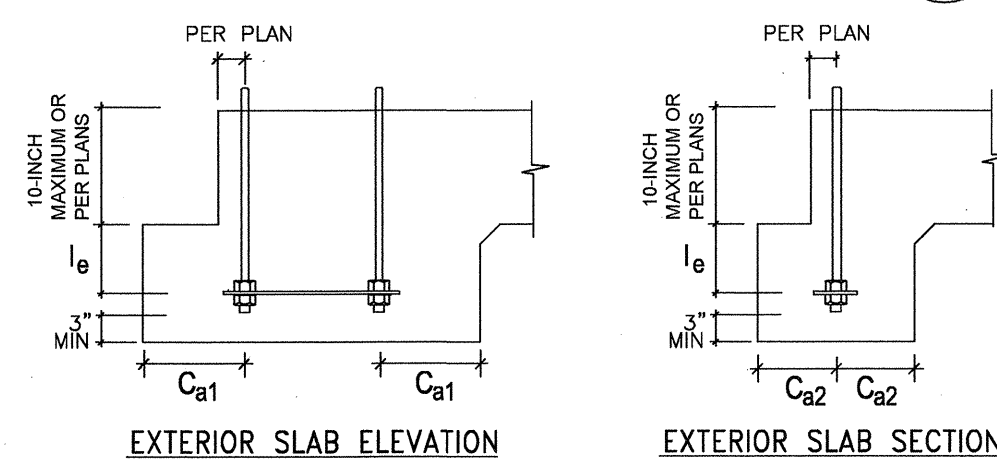
THREADED ROD HOLD DOWN ANCHOR WITH 1/2x3x3  
PLATE WASHER & NUT. **Hardy Frame** BOLT  
BRACE(HFXBB) MAY REPLACE PLATE WASHERS  
WHEN ASTM F 1554 GRADE 36 THREADED ROD IS  
SPECIFIED.

NOTE: COUPLING NUTS MAY BE USED TO EXTEND THREADED ROD LENGTH THROUGH STEM WALL

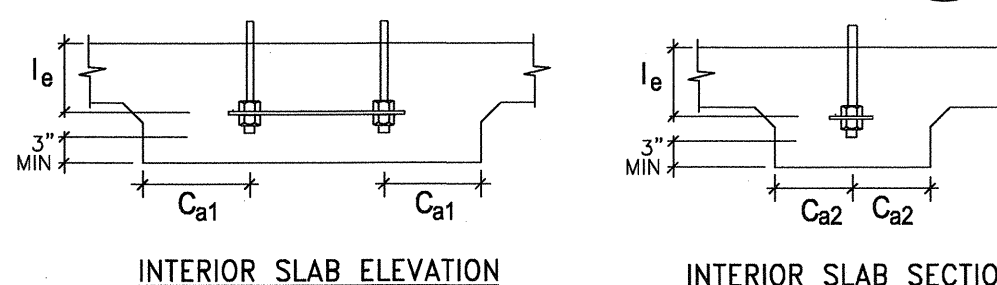
HARDY FRAME ANCHORAGE AT STEM WALL  
STEM WALL ELEVATION



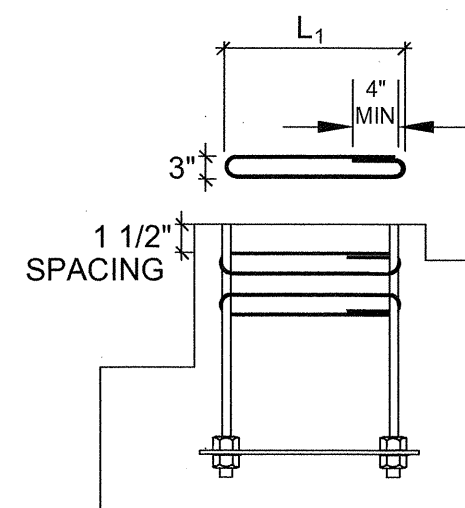
HARDY FRAME 2009 IBC HOLD DOWN ANCHORAGE



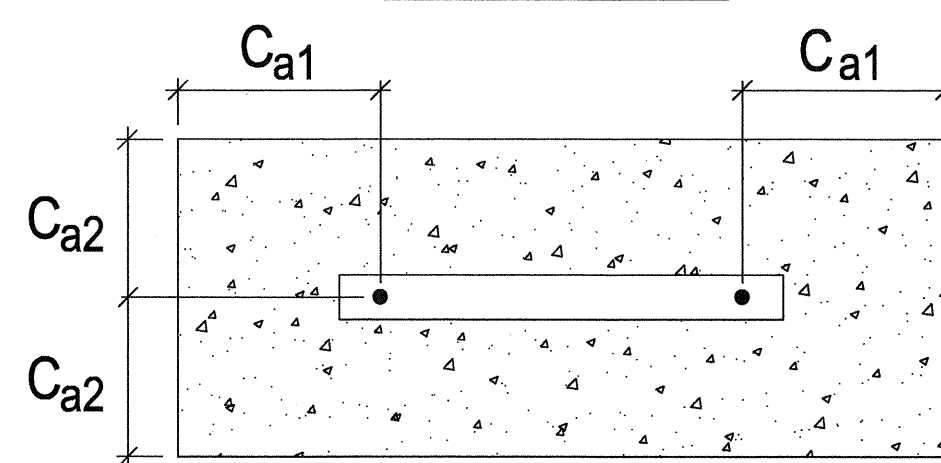
HARDY FRAME 2009 IBC HOLD DOWN ANCHORAGE



HARDY FRAME 2009 IBC HOLD DOWN ANCHORAGE

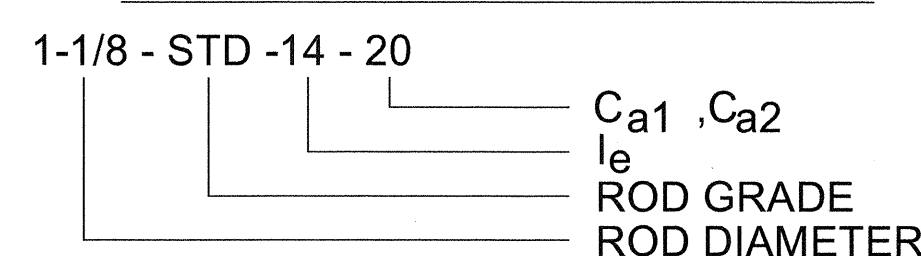


SHEAR TIE @ CURB



ANCHORAGE - PLAN VIEW

## ANCHORAGE NOMENCLATURE



$I_e$  = LENGTH OF EMBED  
 $C_{a1}, C_{a2}$  = END & EDGE DISTANCE

REVISIONS	DATE
-----------	------

## HFX-Series Panels-Typ Foundation Details

THIS DETAIL SHEET IS NOT PROPRIETARY AND IS NOT REQUIRED  
FOR PLAN SUBMITTAL WITH HARDY FRAME PRODUCTS

# HARDY↑↑ FRAMES<sup>TM</sup> inc.

A Miltek Company  
789 S. VICTORIA AVE., SUITE 200, VENTURA, CA 93003  
TELEPHONE: 800 754-3030 / [www.hardyframe.com](http://www.hardyframe.com)

DATE:

1-1-2011

HFX1  
FDN